









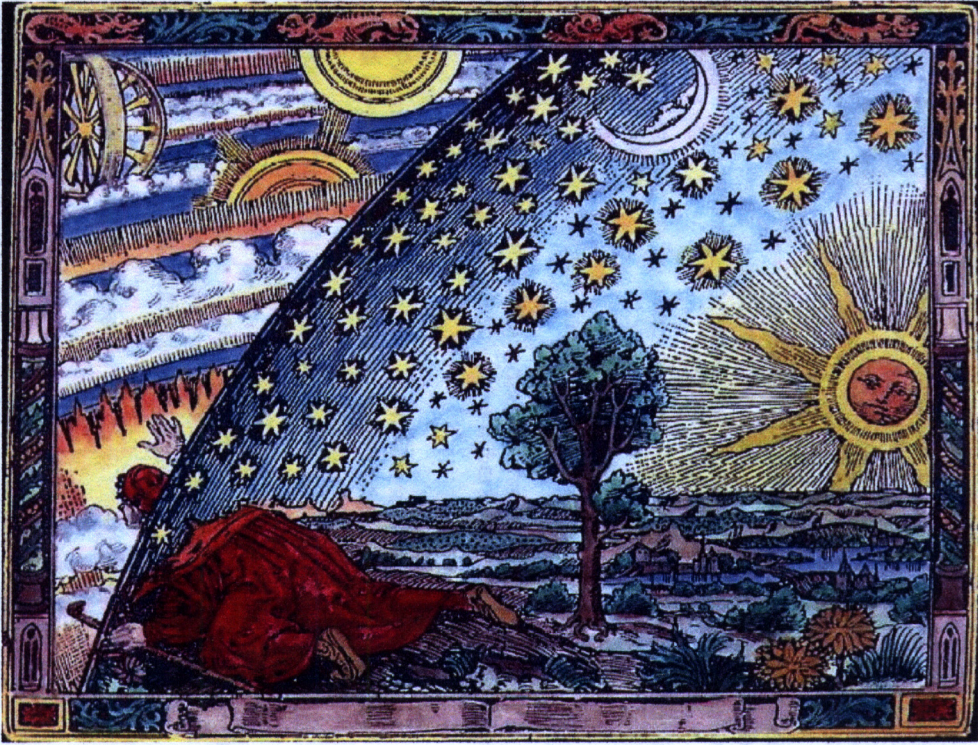




VENIT POST FUNERA VIRTVS

ANNO DOMINI MDCCLXXII. MENS FEBRUARII. DIE VIGINTI. SEPTIMA. HUIUS. MORTUUS. EST. DOMINUS. HIC. PRAESIDIUM. VNIUS. UNIVERSITATIS. PRAESIDIUM. VNIUS. UNIVERSITATIS. PRAESIDIUM. VNIUS. UNIVERSITATIS.









Pharmacia illustrata Tab. Theophrasti aenator & Medicinae utriusque Doctor. D.F. gratia. inventor. Paulus Vander Boort Amstelredamensis pinxit.

ANNA AFFLATA DIVINO NEMO QUODAM PATE

IC  
NI  
ORIVM  
ELIX CVI  
CONSILII

PHARMACIA

PHARMACIA  
PHARMACIA  
PHARMACIA

PHARMACIA  
PHARMACIA  
PHARMACIA

PHARMACIA  
PHARMACIA  
PHARMACIA

PHARMACIA  
PHARMACIA  
PHARMACIA

PHARMACIA  
PHARMACIA  
PHARMACIA

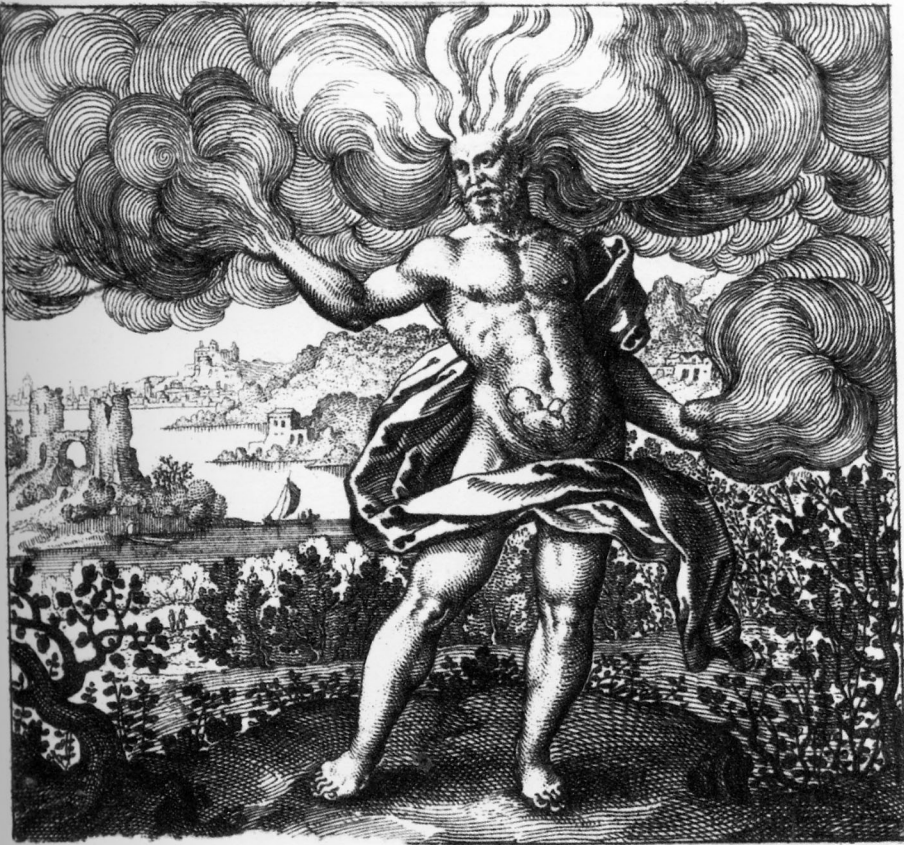
PHARMACIA  
PHARMACIA  
PHARMACIA

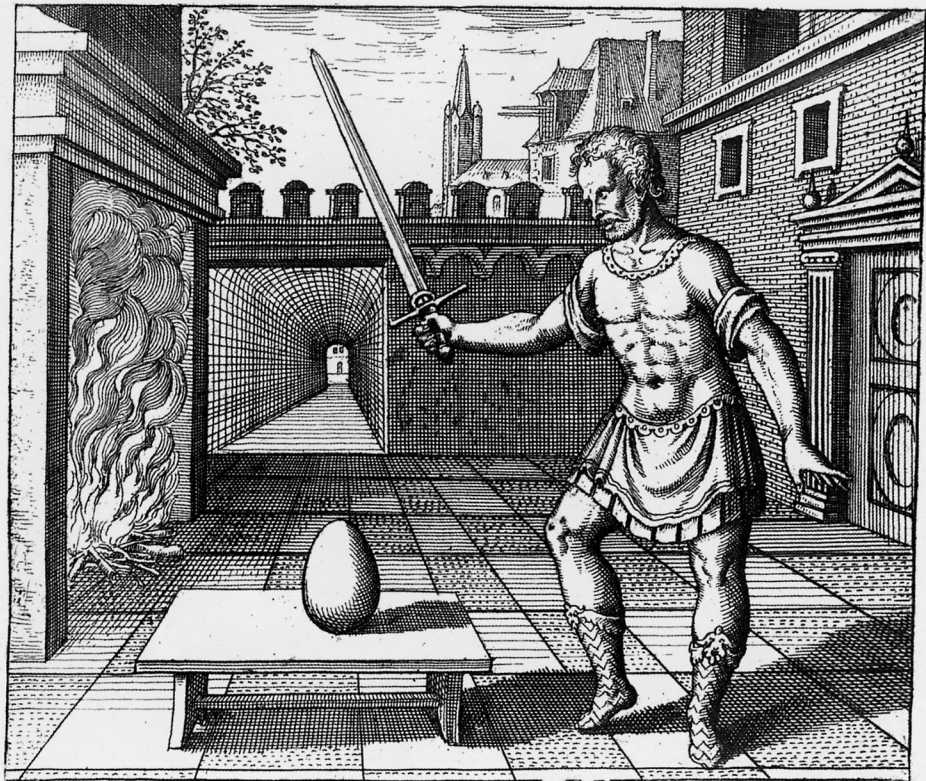
TATVM SVCCEDET ALIQUANDO

ESTIV  
ENTE

Maturandum

FF Virgo  
pinxit.













Joseff Arcimbaldi imago









Geometria condotta da Archimede Siciliano et Argeira calabrese  
Vesta morella

13



Musica condotta da Boetio latino et Arione greco  
Vesta gialla fraversata di rosso le Bolle al Polto d'oro  
e le altre per la uesta d'argento



*Rhetorica condotta da Cicerone Romano et Demostene Attico*  
*Vesta rosa*

10



*Astrologia condotta da Ptolomeo Alessandrino e da Iulio Hygino Romano*  
*Vesta bianca le fasce rose e le stelle d'oro*

11











La Corona doue si Coronò Re de Romano Rodolffo el primo li  
Nouembro 1173 in Ratisbona Crona ch'era in aduiscerana che  
feco San Carlo Magno et era di tanta larghezza ch'gh'auancaua  
doi dita per parte era tutta a oro edella medema fattura  
Io Giuseppe Arcimbaldo fui prot.



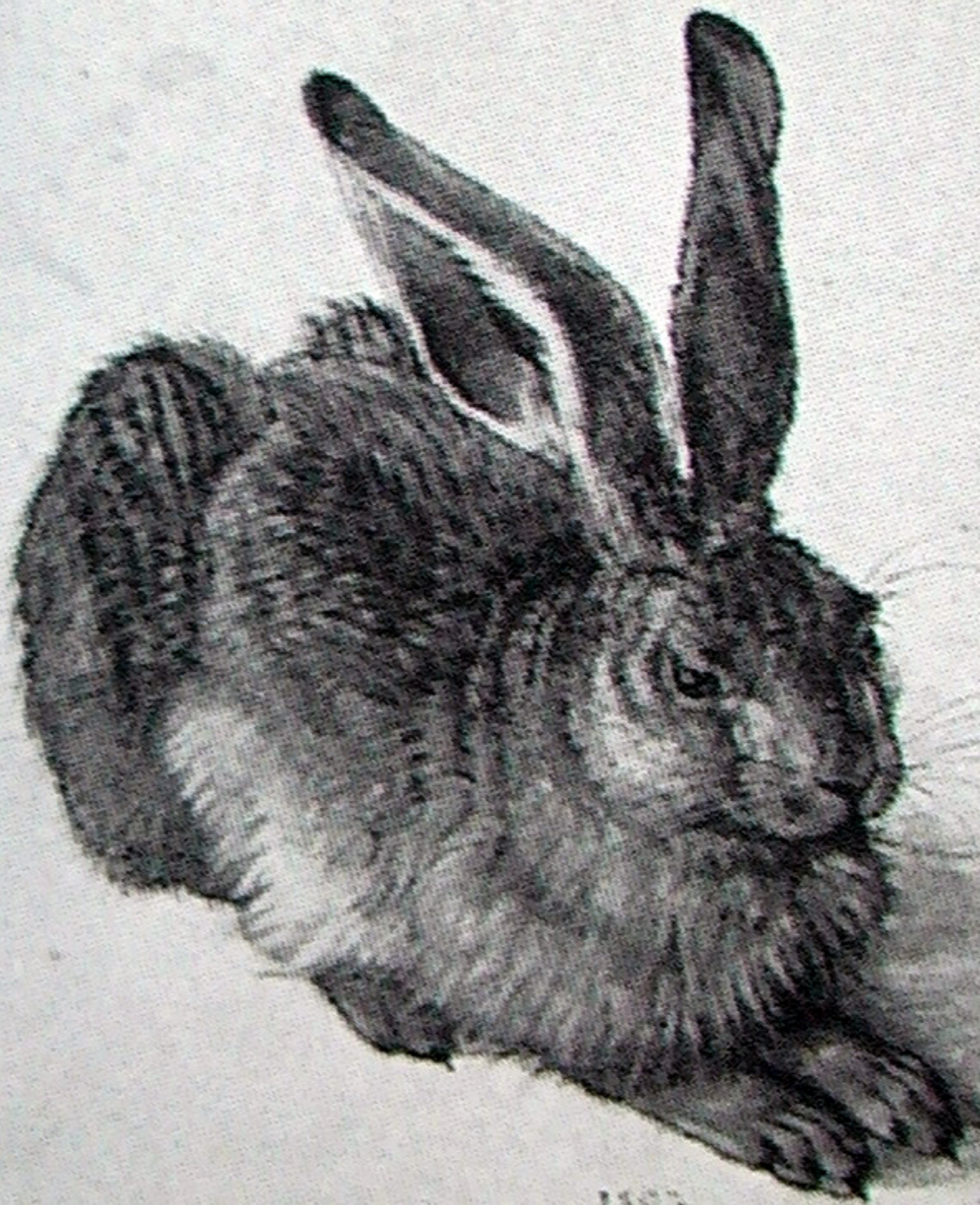
La Corona doue si Coronò Rodolffo Re di Bouemia de  
me d'omo Carlo come si uede nel prot. disegno 1575  
il giorno de S.<sup>ta</sup> Maria di Settem.

Io Giuseppe Arcimbaldo fui prot.



PISCE SUPER CURVO VECTVS CANTABAT ANION





1807

AD



Scheitel  
Der hind' wirbel  
Stirn

Augraum  
Nasen  
Kin

Höhe der achffel  
Höhe des halß  
grübleins  
Der prüft  
Der vchffen  
Zütlein  
Vnder den prüfte

In der weichen  
Im nabel  
Der hüfte art

End der hüfte  
Auff der scham

End der scham  
End des hindern

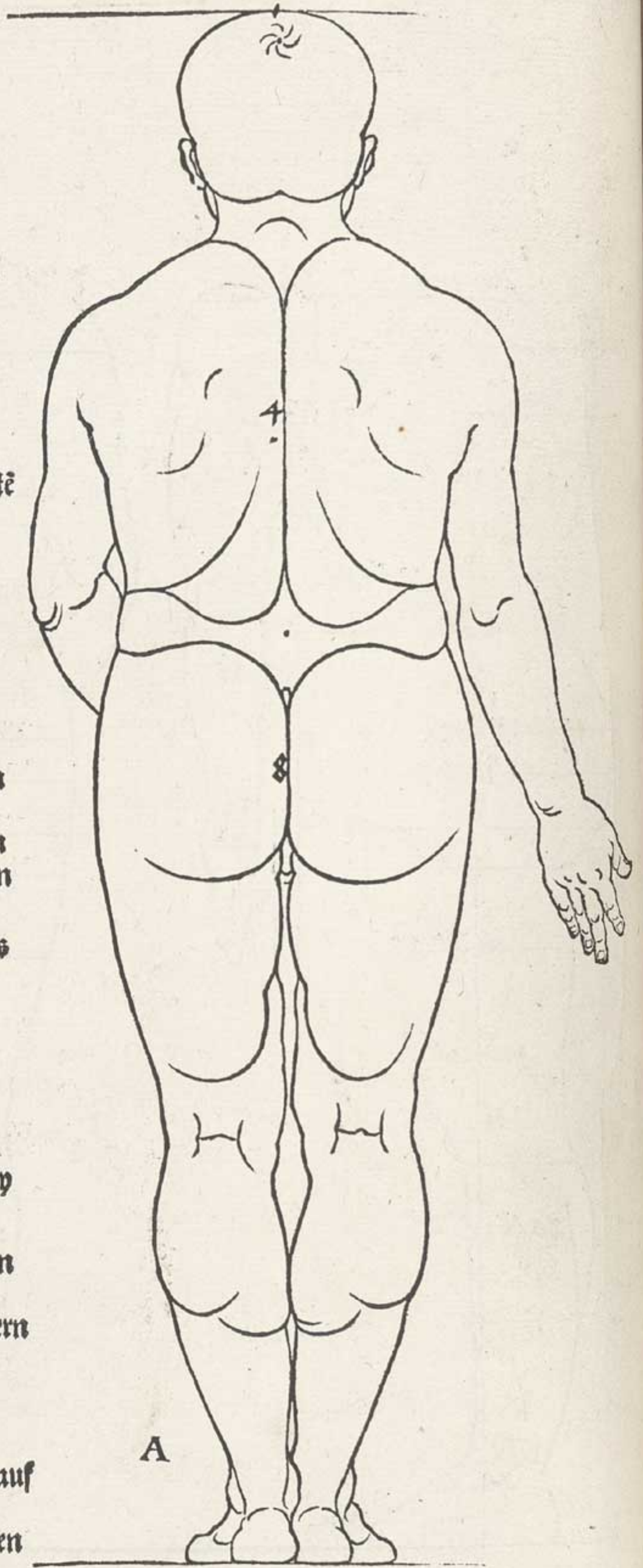
Einpeyssen des  
beins

Ob dem kny

Mitten im kny  
Vnder dem kny

End des euffern  
wadens.  
Ennd des innern  
wadens.

A  
Höch des riß auf  
dem fuß.  
End des knorren  
am schinbein  
Sohn



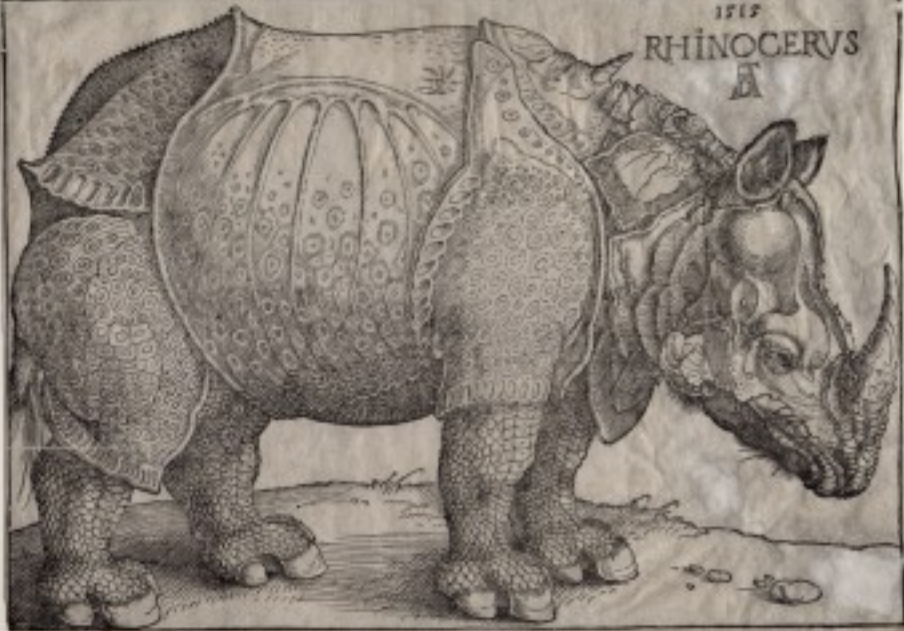
POTENTISSIMVS MAXIMVS ET INVICTISSIMVS CAESAR AVGVSTISSIMVS  
QVI CVNCTOS SVI TEMPORIS REGES ET PRINCIPES IUSTICIA PRVDENTIA  
MAONANIMITATE LIBERALITATE PREGIPVE VERO BELLICA LAVDE ET  
ANIMI FORTITVDINE SVPERAVIT NATVS EST ANNO SALVTIS HVMANE  
M CCCC LXX DIE MARCHI EX VENTI ANNO LIN MENSES IX DIES XXV  
DECESSIT VERO ANNO MD XIX MENSIS IANVARI DIE XII QVEM DEVS  
OPT MAX IN NVMEREVA VIVENCIVV REBRE VELIT



• PORTRAIT OF MAXIMILIAN I • DÜRER •

1515  
RHINOCERVS

A







1494.  
Das Bild ist von Hans Holbein dem Jüngeren gemalt.  
Das Bild ist von Hans Holbein dem Jüngeren gemalt.  
H. H.

2

97













POTENTISSIMVS · MAXIMVS · ET · INVICTISSIMVS · CÆSAR · MAXIMILIANVS  
QVI · CVNCTOS · SVI · TEMPORIS · REGES · ET · PRINCIPES · IYSTICIA · PRVDENCIA  
MAGNANIMITATE · LIBERALITATE · PRECIPVE · VERO · BELLICA · LAVDE · ET  
ANIMI · FORTIDVDINE · SVPERAVIT · NATVS · EST · ANNO · SALVTIS · HVMANÆ ·  
M · CCCC · LIX · DIE · MARCHII · IX · VIXIT · ANNOS · LIX · MENSES · IX · DIES · XXV  
DECESSIT · VERO · ANNO · M · D · XIX · MENSIS · IANVARII · DIE · XII · QVEM · DEVS  
OPT · MAX · IN · NVMERM · VIVENCIVM · REBRE · VELIT ·

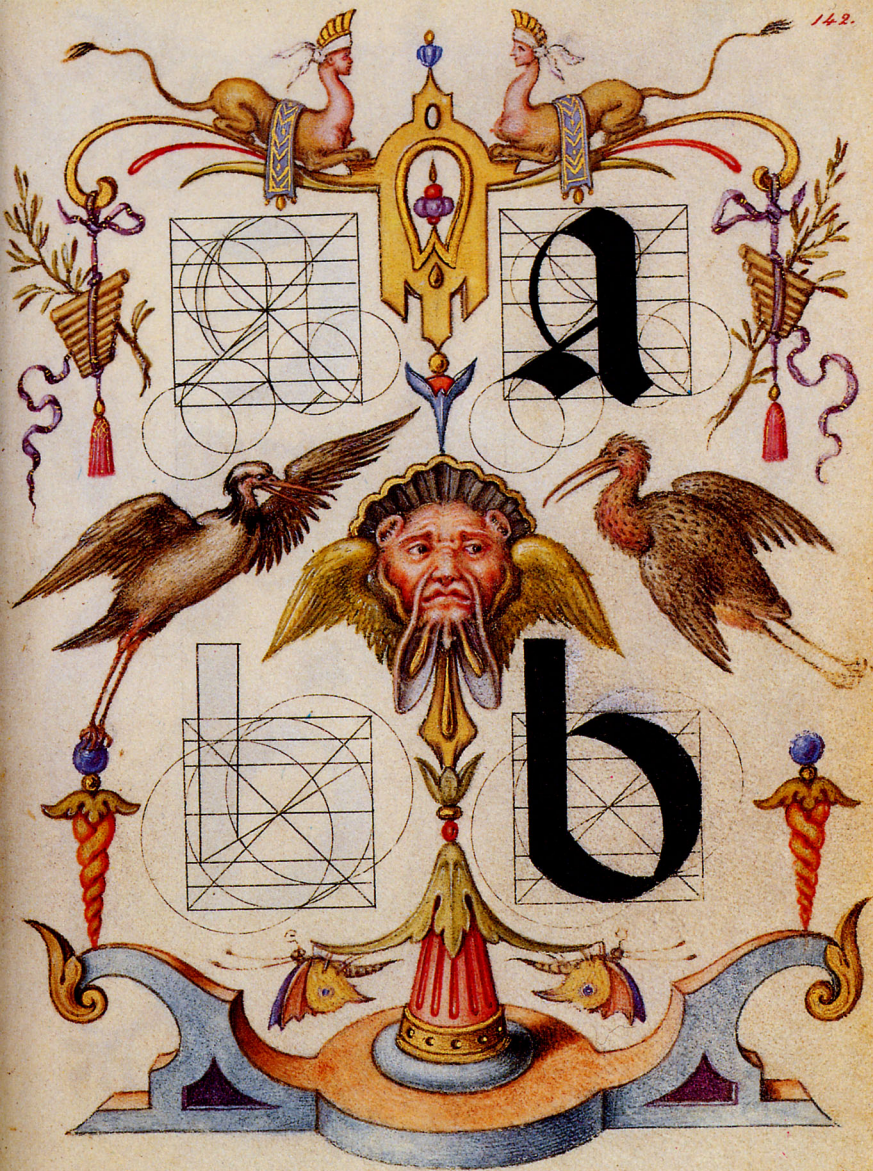


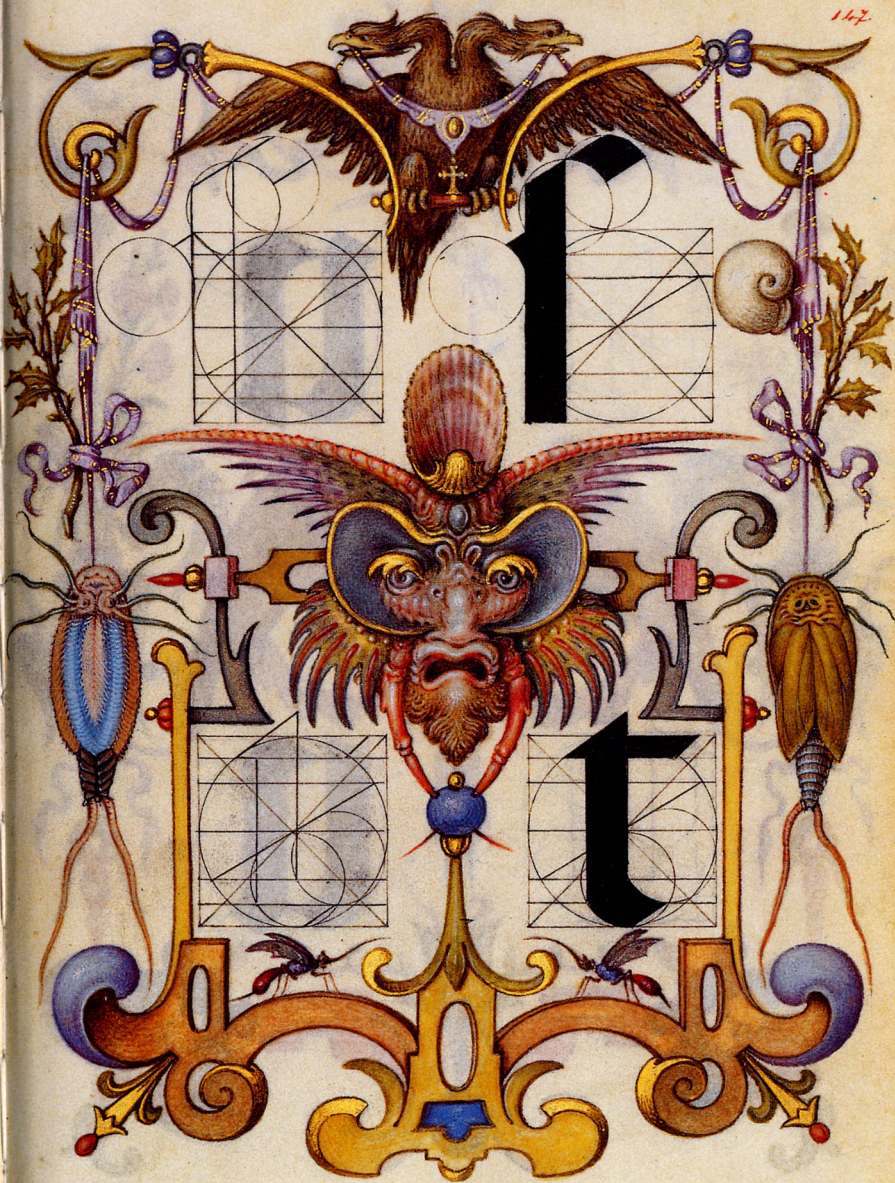
1715  
51

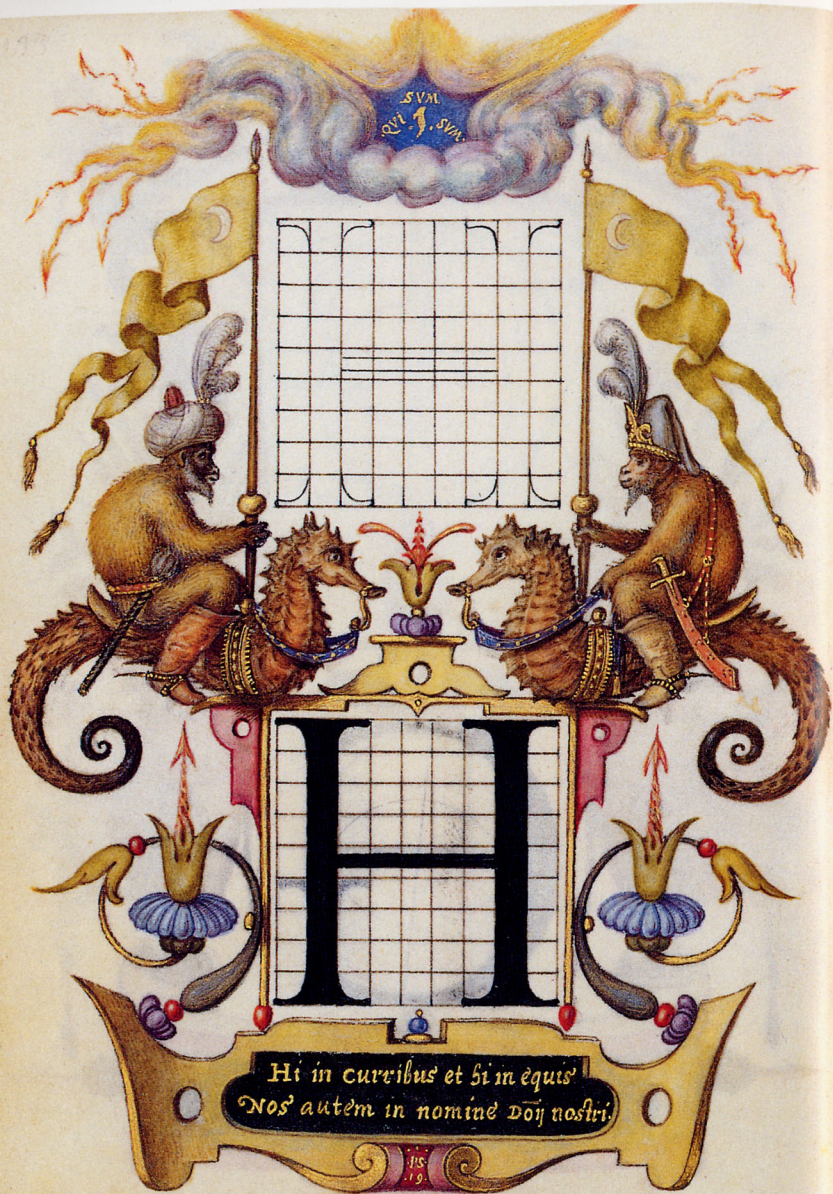


MELENCOLIA I

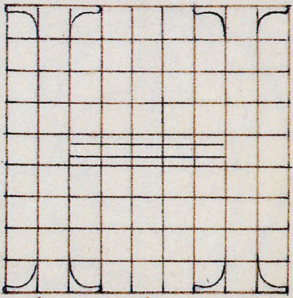
10	3	2	15
5	10	11	8
6	7	12	
4	15	14	1







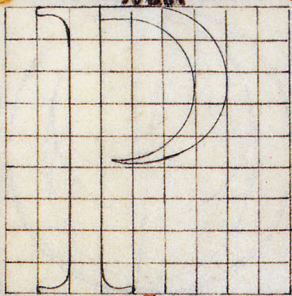
SVM  
271. 7. SVM



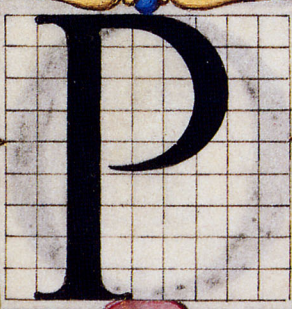
Hi in curribus et hi in equis  
Nos autem in nomine Doy nostri

ps  
19

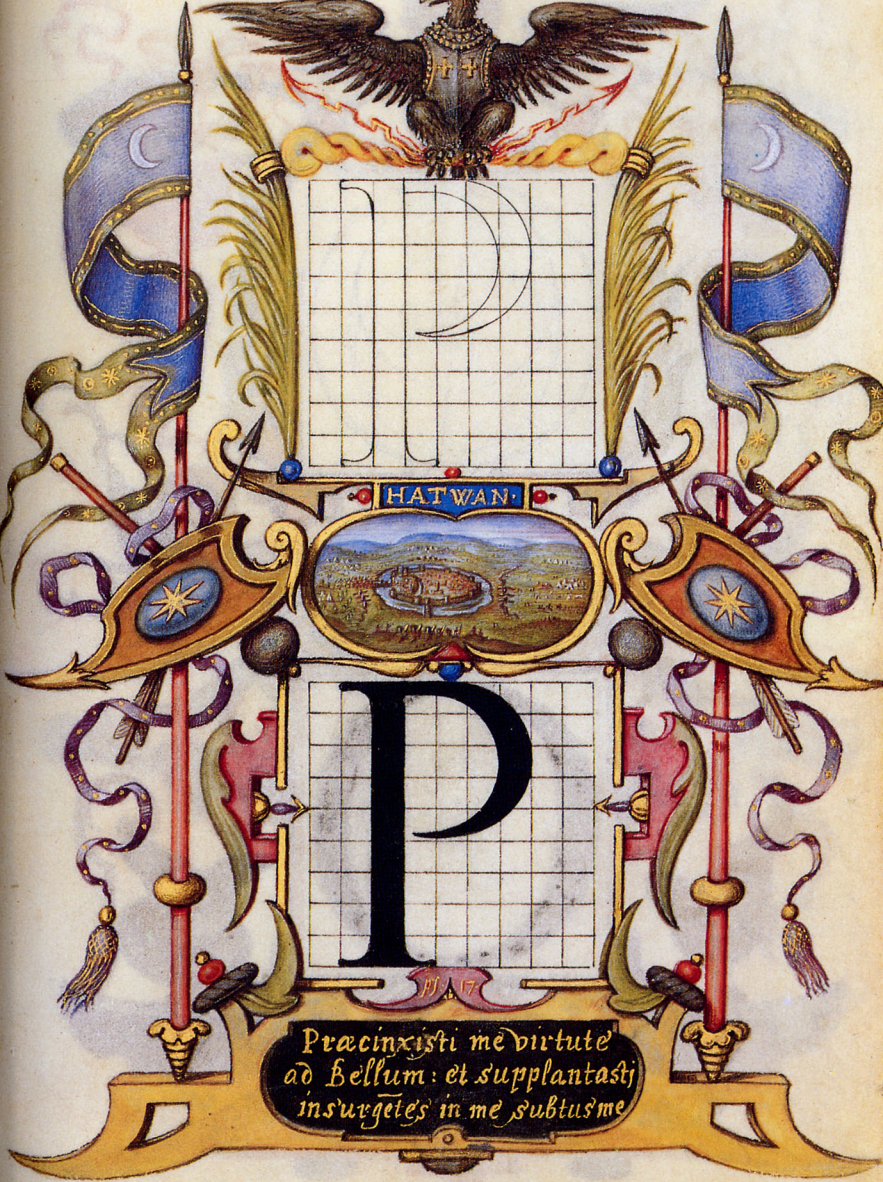




HATWAN.



Præcinxisti me virtute  
ad bellum: et supplantasti  
insurgentes in me subtus me





Rex omnis terræ Deus psallite.

35

46





*Omnia mea mecum porto*

*Jacobus Hufnagel F. in Pontis  
alv. 1633 die 12 Augustij*

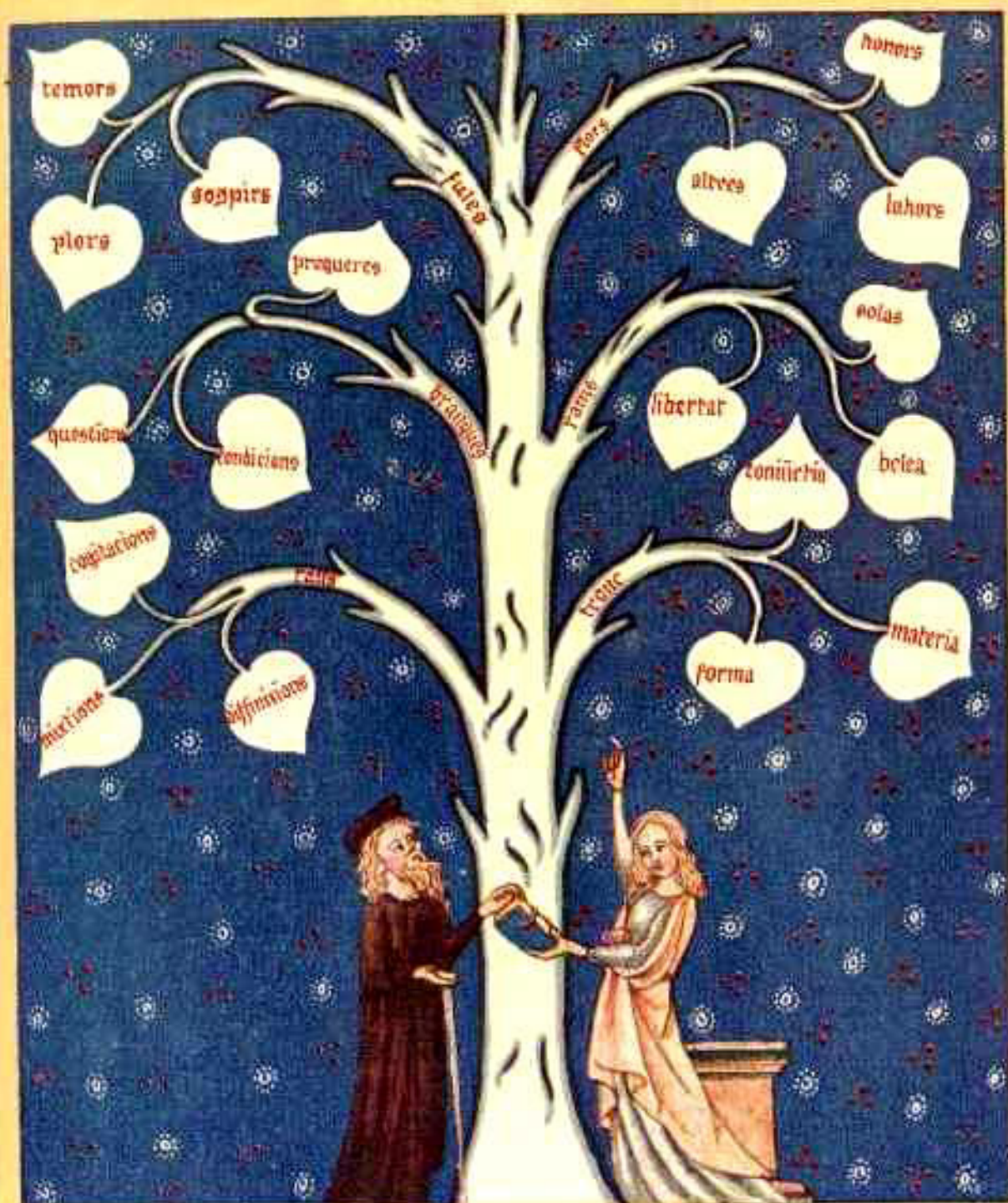
Omnia caro fœnum, et omnis magnificentia eius.  
sicut flor agri. *ps:40-*



Aux champs aultant quil y at de fleurs.  
en amour aultant il y at de douleurs.











...  
...  
...  
...  
...

...  
...  
...  
...  
...



Iohannes de ...  
 Argenteo ...  
 Dux ...  
 profus ...  
 d'potes ...  
 Salencia ...  
 Jervis ...  
 Leticia ...

Dicitur ...  
 Dicitur ...  
 Dicitur ...  
 Dicitur ...  
 Dicitur ...

I  
 II  
 III  
 IV  
 V  
 VI  
 VII  
 VIII  
 IX  
 X  
 XI  
 XII



Et dicitur ...  
 Et dicitur ...  
 Et dicitur ...

Et dicitur ...  
 Et dicitur ...

Et dicitur ...  
 Et dicitur ...

Et dicitur ...  
 Et dicitur ...



Et dicitur ...  
 Et dicitur ...



























ВЪВЕДЕНИЕ  
СВЯТЫХ  
СЛАВЯНСКИХ  
БРАТЯ

СВЯТЫХ  
СЛАВЯНСКИХ  
БРАТЯ















FABRICA  
RVDOLPHINA



GIFT SHOP  
DÁRKY



Karolo Quarto





QVI IGNORAT IGNORABITUR.

NESCIO VOS



SCIENTIA  
DIFFICILIS SED  
FRUCTUOSA.



SAPIENTIAM AIQUE DOCTRINAM STULTI DESPICIUNT. *Psalm. 141.*





GUBERNACULA

INTELLIGENS

POSSIDEBIT

MELIOR EST AQUISITIO

SCIENTIÆ NEGOTIATIONE ARGENTI



SAPIENTIA VITAM TRIBUUNT  
ET ERUDITIO  
POSSESSORI SUO

Eccle. 7  
v. 13









SAPIENTIA  
EDIFICAVIT SIBI  
DOMUM

A B C D E F G H I  
K L M N O P Q R S  
T U V X Y Z



TRADIDIT FILIA  
SVM DISPUTATI  
OVI EIKUM  
C. 1. 1. 1.



*Antonio Arnobio obvenit die 17. Julii 1772 benivolentia*

Ioannis Keppleri

# HARMONICES MUNDI LIBRI V. QVORVM

Primus GEOMETRICVS, De Figurarum Regularium, quæ Proportio-  
nes Harmonicas constituunt, ortu & demonstrationibus.  
Secundus ARCHITECTONICVS, seu ex GEOMETRIA FIGVRATA, De Fi-  
gurarum Regularium Congruentia in plano vel solido:  
Tertius proprie HARMONICVS, De Proportionum Harmonicarum or-  
tu ex Figuris; deque Naturâ & Differentiis rerum ad cantum per-  
tinentium, contra Veteres:  
Quartus METAPHYSICVS, PSYCHOLOGICVS & ASTROLOGICVS, De Har-  
moniarum mentali Essentiâ earumque generibus in Mundo; præfer-  
tim de Harmonia radiorum, ex corporibus cœlestibus in Terram de-  
scendentibus, eiusque effectu in Natura seu Anima sublunari &  
humana:  
Quintus ASTRONOMICVS & METAPHYSICVS, De Harmoniis absolutissi-  
morum cœlestium, ortuque Eccentricitatum ex proportioni-  
bus Harmonicis.  
Habet comparationem huius Operis cum Harmonicis CL  
audi libro III. cumque Roberti de Fluctibus, dicti Flud. Medici  
in suis speculationibus Harmonicis, operi de Macrocosmo &  
libro III. PROPTER COGNATIONEM



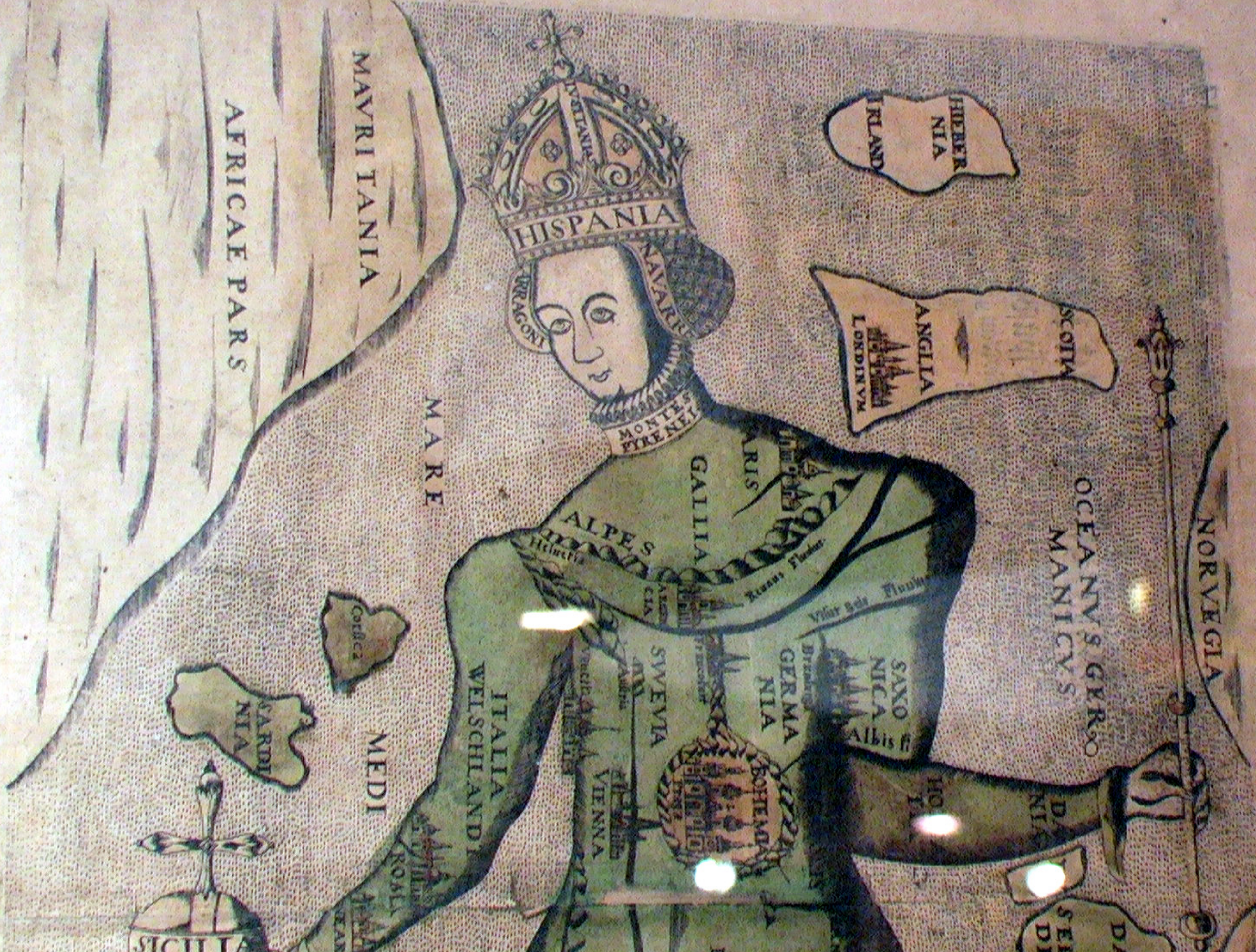
longitudo  
S S an

**H**ome et stelle

**S**tellano alaminus rei expino e hng, cornua via et e an

1	A monalis manus que sunt i cornu sequente.	9	20	2
2	M edia earum.	9	20	22
3	M edionalis manus.	9	20	2
4	I lla q est sup extremitate cornu antecedens.	9	10	21
5	M edionalis manus que sunt i unghia.	9	21	22
6	A ntecedens duax reliquax.	9	21	22
7	S equens earum.	9	21	22
8	A ntecedens manus que sunt sub cuncto dextro.	9	18	22
9	D eclinor duax q sunt in cervice ad attractionem.	9	20	22
10	D eclinor eam ad meridiem.	9	20	22
11	Q uae est sub genu dextro.	9	23	22
12	Q uae est sub genu sinistro curvato.	9	20	22
13	Q uae est sub spina sinistra.	9	20	22
14	A ntecedens duax unghiarum que sunt subventre.	10	2	22
15	S equens earum.	10	3	22
16	S equens manus q sunt i medio corporis.	10	1	22
17	M edionalis duax reliquax antecedentium.	9	29	22
18	S eptemionalis earum.	9	29	22
19	A ntecedens duarum que sunt i dorso.	9	29	22
20	S equens earum.	10	3	22
21	A ntecedens duax que sunt i spina meridionali.	10	6	22
22	S equens earum.	10	4	22
23	A ntecedens duax q sunt i radice caudae.	10	4	22
24	S equens earum.	10	7	22
25	A ntecedens quatuor q sunt i lat' attractionis caudae.	10	7	22
26	M edionalis manus reliquax.	10	11	22
27	M edia earum.	10	10	22
28	A ntecedens eorum et e sunt sup extremitate caudae.	10	11	22

Illarum g. 28. Stellarum i magnitudine sua sunt. 9. In quibus 8. In quibus



AFRICA PARVA

MAVRITANIA

MARE

HISPANIA

IRLANDIA

SCOTIA  
ANGLIA  
LONDINVM

NORVEGIA

OCEANVS GERMANICVS

GALLIA

ALPES

ITALIA  
WELSCHLANDI

GERMANIA

SVEVIA

BOHEMIA

MEDI

SARDINIA

SICILIA

DA  
SERDIA

DA





Orbita  $\varnothing$

Orbita terrae motus annui

1919

Handmade  
100% Gold  
COPPER



Decorative motifs at the bottom of the wall.



IN ABSCONDITIS PARABOLA-  
RUM CONVERSABITUR.



















NICOLAVS COPERNICVS TORNAEVS

OB. 1543.

1473

NAT. ANNO  
MATHEMAT.

BORVSSVS

RVDOLPHVS II. IMP. AVG. P. F. INCL. VICTOR. P. P.



RODOLPH. II. A DEO DAT. ATERN. PRINC. REIQ. ROM.  
DN'S. FVNDATOR. PV. BL. QVIETIS. ET EXTINGTOR.  
TYRCKE. E. E. R. TYRANNIDIS. PATR. PAT. SEMP. AVGVST.  
REX BOHEM. REX HUNGARIE. S. ARCHID. AVSTRIS

*N*on sine mente geris, CAESAR, sine numine, nomen  
Quod de gente tua Caesar habebat idem.  
Hic, ut pace frui posset, nam, bella gerebat;  
Non alium spectant & tua bella scopum.  
Huic lex summa, SALVS POPVLI, fuit: una SALVTI  
ADSIIT ut PVBLICAE, te quoq, cura coquit.

HISP.



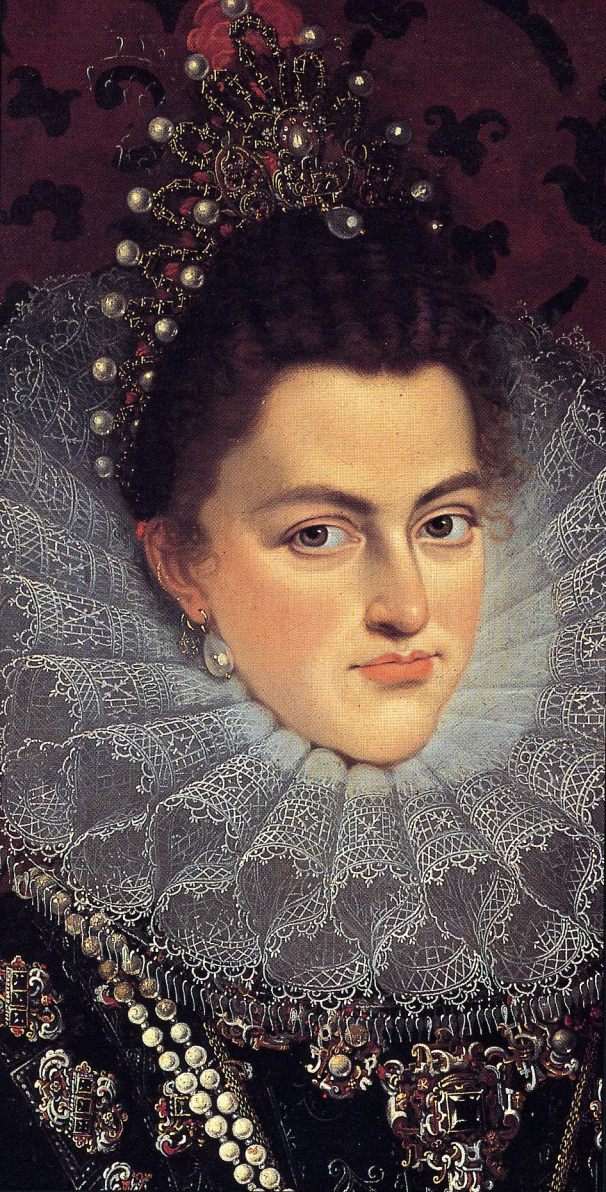


THE ENGRAVER HAS BEEN ADVISED BY THE PUBLISHERS THAT THE ENGRAVING OF THIS PICTURE IS NOT TO BE REPRODUCED IN ANY MANNER WITHOUT THE PERMISSION OF THE ENGRAVER.













TITIANVS F

IACOBUS DE S...  
CIVIS ROMANVS...  
ANTIQUARIVS E...  
DE ACANAL...











RVDOLPHVS. VNGARIAE. PRINCEPS.  
ANNO AETATIS SVAE. XVI. 1553



A. POMEIS. S. P.  
MADRID 1567













AVGVSTISSIMO INVICTISSIMO, LAETISSIMO, ET FELICISSIMO ROMANORVM IMPERATORI, RVDOLPHO II. DNO  
 SVV. CLEMENTISSIMO, GRATVLATIONES, FIRMI, ET SYMLECTIONIS SICHENI HVMILITER DICAT,  
 CONSILII PRINCEPS SIGIS. A. GIBBY. FACITUR. ANNO MDCCLII









*Romanorum Imperatores*  
*Rudolphus II Imp. Rex Germ. Hung. Boh. Dal.*  
*Cro. Sla. etc. Archidux Austriae.*

*H. XXXIII. Gem.*



*Rudolphus II. Rom. Imp. Rex Germ. Hung.*  
*Boh. Dal. Cro. Sla. etc. Arch. Austriae.*

*H. XXXIV. G.*



*Rudolphus II. Rom. Imp. Rex Germ. Hung.*  
*Boh. Dalm. Cro. Sla. etc. Arch. Aus.*

*H. XXXV. G.*



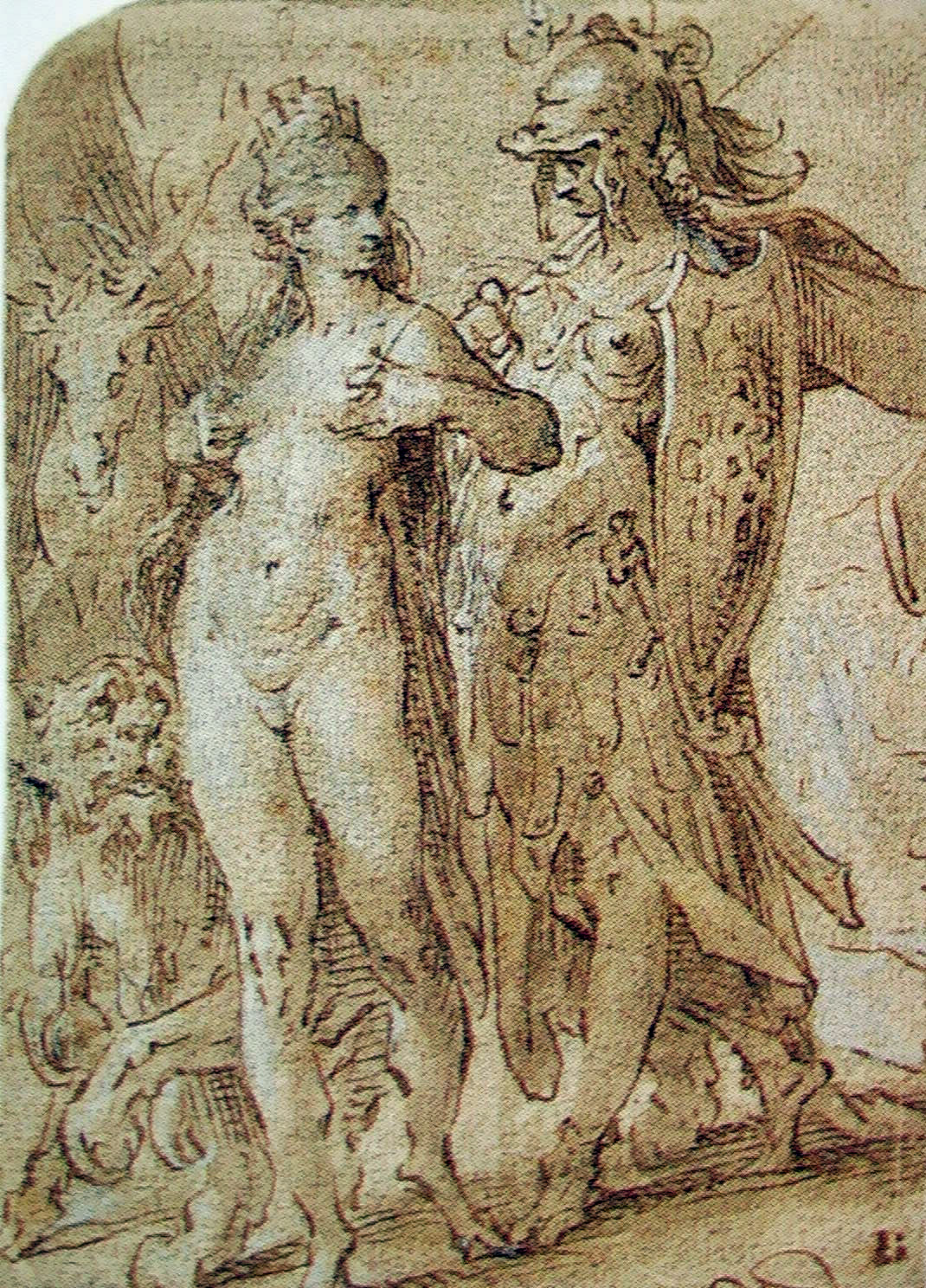
13. Aegidius Sadeler: Rudolphine impresse from the *Symbola Divina et Humana*  
These examples of personal emblems are typical of the contemporary taste.



HODIENUM  
CRAS

























ز کیه و رصد خانه مختصر

نمودند نزدیک آن مقبر

در و پانزده اهل علم کزین

شدند ازین خدمت تفری

پس آنکه ترصدید مریدان

بشدخ ما قابل مکدهان





EFFIGIES TYCHONIS BRAHE O.F.  
ÆDIFICII ET INSTRUMENTORUM  
ASTRONOMICORUM STRUCTORIS.  
A. DOMINI 1587. ÆTATIS SUE 40.



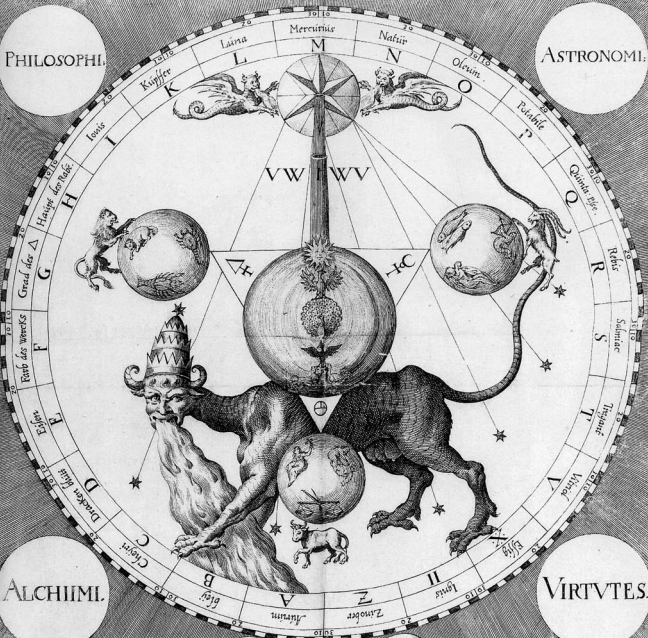
EFFIGIES TYCHONIS BRAHE Q. F.  
ADIFICII ET INSTRUMENTORUM  
ASTRONOMICORUM STRUCTURIS.  
A. DOMINI 1572. ETATIS SUE 40.



Z ANFANG. EXALTATION.

PHILOSOPHI.

ASTRONOMI.



ALCHIMI.

VIRTUTES.

CABALA

*Imago cupiditatis sic depingitur*



*Imago auaricie sic depingitur*





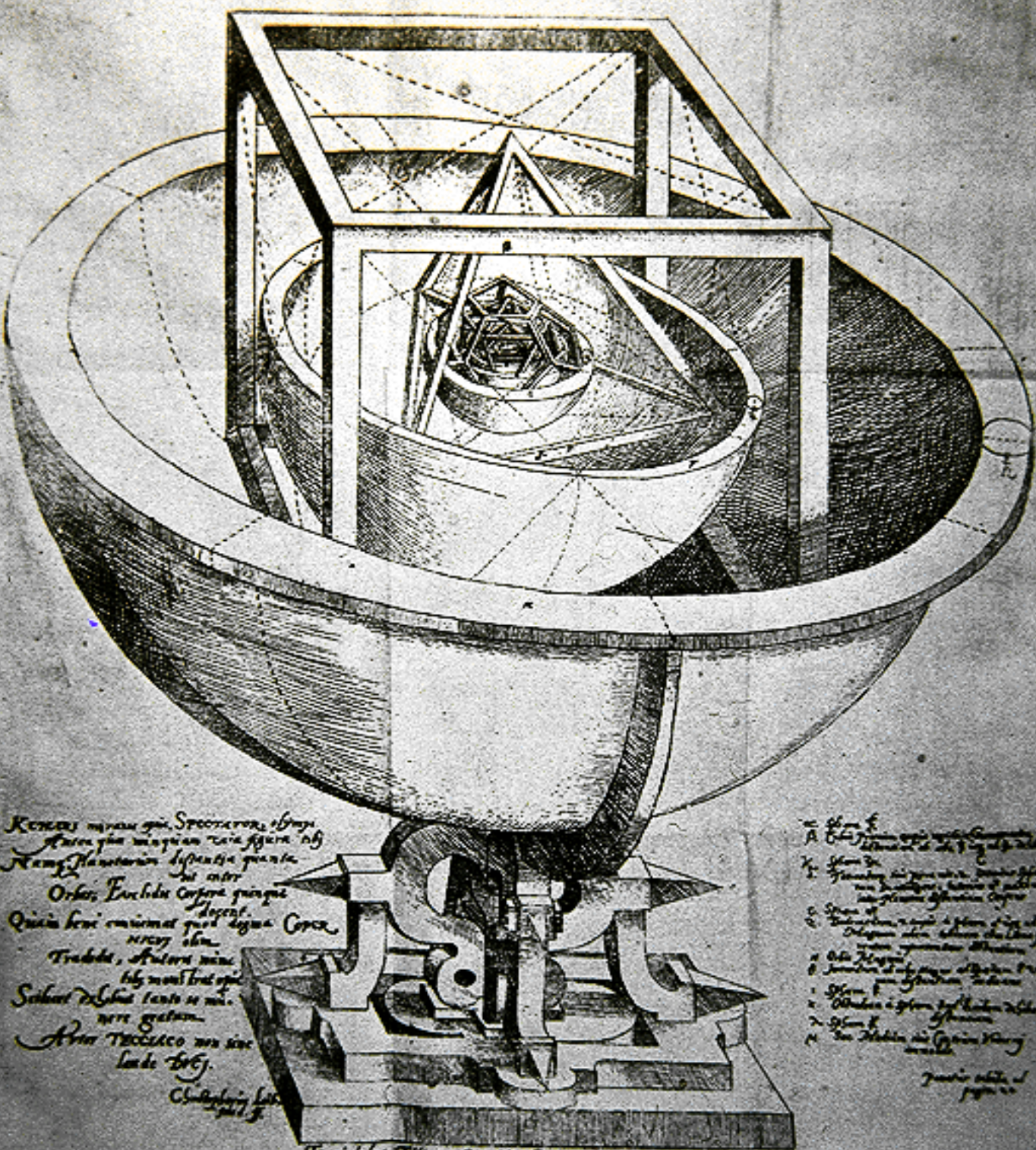






TABULA III. ORBIVM PLANETARVM DIMENSIONES, ET DISTANTIAS PER QVINGVE  
REGVLARIA CORPORA GEOMETRICA EXHIBENS.

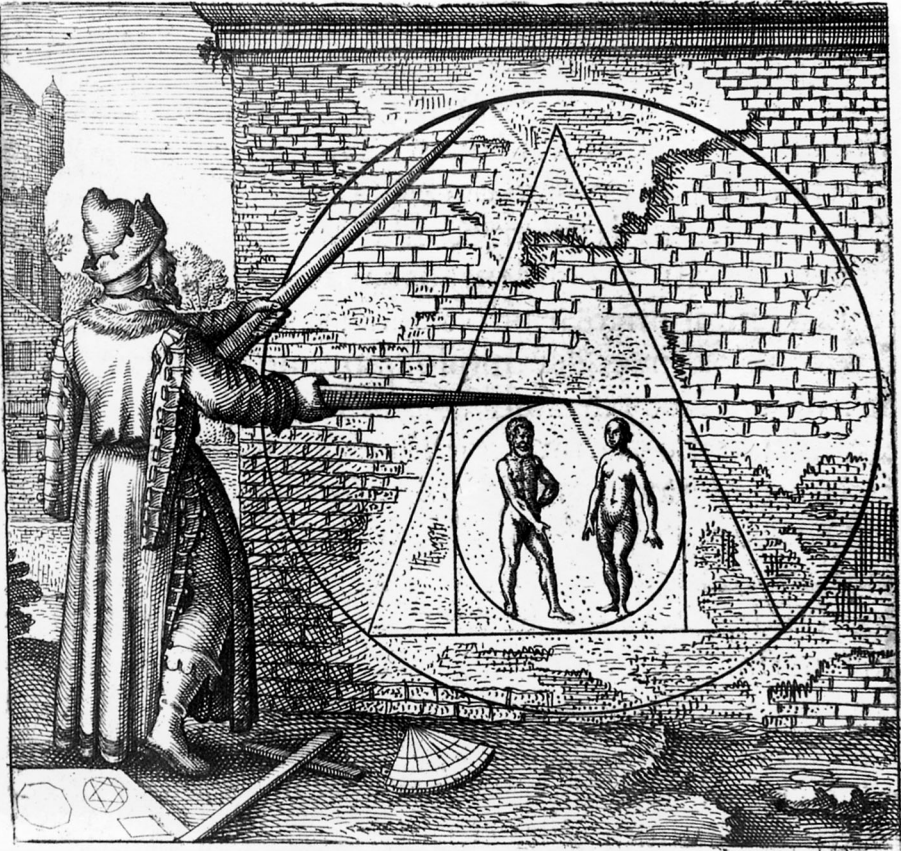
ILLVSTRISS: PRINCIPI, AC DÑO: DÑO, FRIDERICO, DVCI WIR-  
TENBERGKO, ET TEGGIO, COMITI MONTIS BELGARVM, ETC. CONSECRATA.

















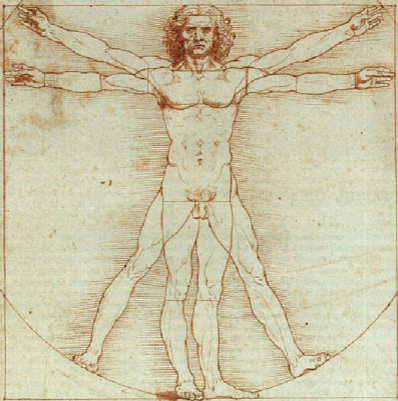
PALATIUM IMPERATORVM  
PRAGAE QVOD VVLGO RATZIN APPELLATVR



PRAGA  
*Regni Bohemiae metropolis*



Handwritten text in a cursive script, likely a Latin or Italian manuscript, located at the top of the page. The text is partially obscured by the top edge of the drawing's circle.



Handwritten text in a cursive script, likely a Latin or Italian manuscript, located at the bottom of the page. The text is partially obscured by the bottom edge of the drawing's circle.



TABLE  
**RUDOLPHINÆ,**

QUIBUS DETONANTUR MUNDI, TERRE  
*et ceteris*

*A. Thomæ de Altona*

**TYCHONE,**

*De Astronomia*



**PRIMUM ANIMO CONCEPTA ET DESTINATA,  
 TA ANNOCHRISTI MDCLXXV. EXORDIO QUAM ET A PRINCIPALI  
 VICECOMITIS MATHIAS FERDINANDI, COMITIS PALATINI RHEODANI  
 ET ARCHIEPISCOPI ELECTORIS SACCORUM ARCHIEPISCOPI SACCORUM  
 ARCHIEPISCOPI SACCORUM ARCHIEPISCOPI SACCORUM ARCHIEPISCOPI SACCORUM  
 ARCHIEPISCOPI SACCORUM ARCHIEPISCOPI SACCORUM ARCHIEPISCOPI SACCORUM  
 ARCHIEPISCOPI SACCORUM ARCHIEPISCOPI SACCORUM ARCHIEPISCOPI SACCORUM**

**PRIMUM PUBLICUM IN QUODAM, INDE JOHANNI ET  
 ALTONA QUAM ET ALTONA**

**TABLETUM, IN QUODAM, ET ALTONA  
 QUAM ET ALTONA**

**TABLETUM, IN QUODAM, ET ALTONA**

**RUDOLPHI, MATHIAS, FERDINANDI,**

*et ceteris*

**IOANNES KEPLERUS,**

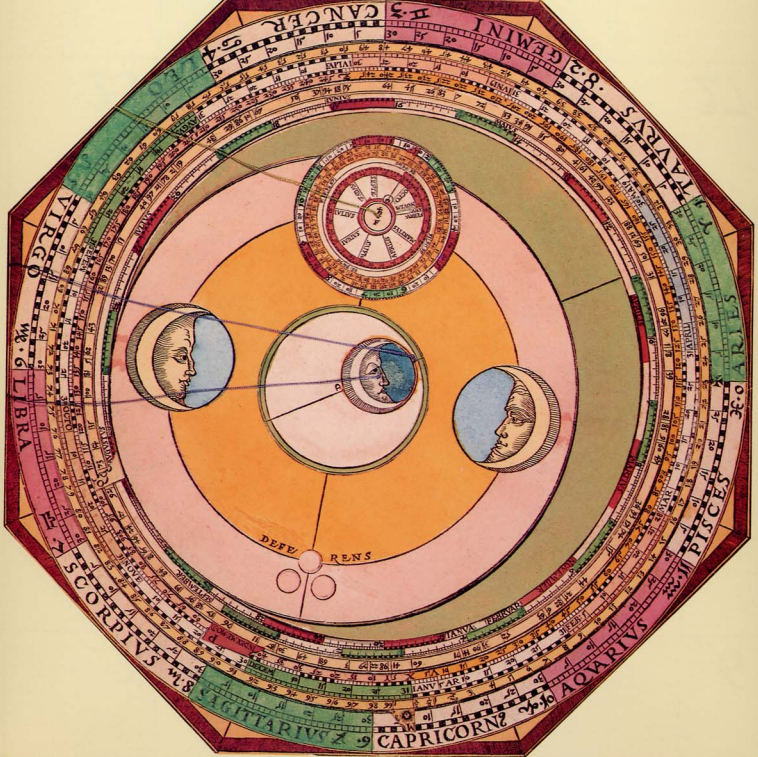
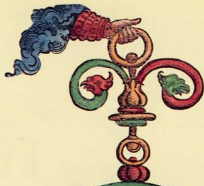
*et ceteris*

*et ceteris*

*et ceteris*











GA BOHEMIÆ METROPOLIS, CCVR ATISSIME EXPRESSA. I.S. 6.2.

